

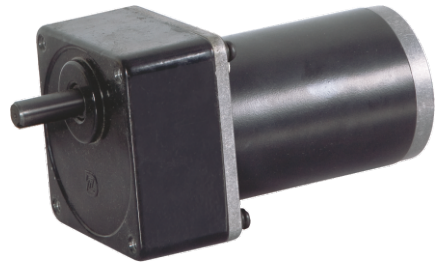
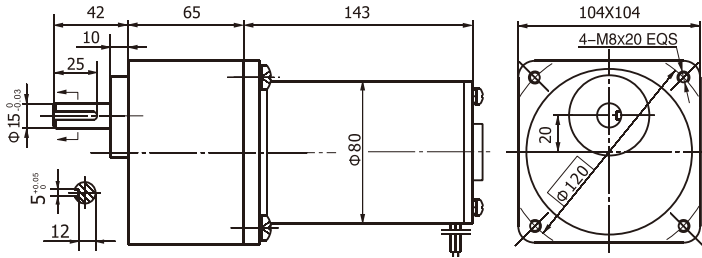
104JB300K/80ZY125

允许转矩范围: 30N.m
Permissible Load Range: 30N.m

● 产品特点和用途 Description of The Product

- 104mm的一体式齿轮减速器，允许负载30N.m。合金结构钢齿轮，全部滚动轴承的配置。
- 104mm integrated gearbox, with rated torque up to 30.0 N.m, alloy constructional steel gears, all equipped with ball bearings.

● 外形和安装尺寸 Dimensions



● 电动机主要技术参数 Motor Technical Data

电机型号 Type	额定电压 Rated voltage VDC	空载转速 No-load speed r/min	空载电流 No-load current A	额定转速 Rated speed r/min	额定转矩 Rated torque N.m	输出功率 Output power W	额定电流 Rated current A	堵转转矩 Stall torque N.m	堵转电流 Stall current A
80ZY125-2420	24	2000	0.5	1700	0.64	110	6	2.9	27
80ZY125-2435	24	3500	1.2	3000	0.70	200	10	3.2	45

● 齿轮减速电机主要技术参数 Gear Motor Technical Data

配置80ZY125-2420直流电机 (80ZY125-2420 DC Motor)

减速比 Reduction ratio	3	5	7.5	10	12.5	20	25	30	50	75
减速级数 Number of gear trains	2	2	2	3	3	3	3	3	4	4
减速器长度(L) Length(L) mm	65	65	65	65	65	65	65	65	65	65
空载转速 No-load speed r/min	667	400	267	160	160	100	80	67	40	27
额定转速 Rated speed r/min	567	340	227	136	136	85	68	57	34	23
额定转矩 Rated torque N.m	1.6	2.6	3.9	4.8	5.8	9.3	12	14	23	25
最大瞬间允许负载 Max. permissible load in a short time N.m	10	10	10	30	30	30	30	30	60	60
转 向 Direction of rotation	CW	CW	CW	CCW	CCW	CCW	CCW	CCW	CW	CW

配置80ZY125-2435直流电机 (80ZY125-2435 DC Motor)

减速比 Reduction ratio	3	5	7.5	10	12.5	20	25	30	50	75
减速级数 Number of gear trains	2	2	2	3	3	3	3	3	4	4
减速器长度(L) Length(L) mm	65	65	65	65	65	65	65	65	65	65
空载转速 No-load speed r/min	1167	700	467	350	280	175	140	117	70	47
额定转速 Rated speed r/min	1000	600	400	300	240	150	120	100	60	40
额定转矩 Rated torque N.m	1.9	3.2	4.3	5.1	6.4	10	13	15	26	30
最大瞬间允许负载 Max. permissible load in a short time N.m	10	10	10	30	30	30	30	30	60	60
转 向 Direction of rotation	CW	CW	CW	CCW	CCW	CCW	CCW	CCW	CW	CW

● 电动机特性图 Motor Characteristic Figure

