

# 永磁直流齿轮减速电机 PM DC Spur Gear Motor

## 60JB50K/45ZY68

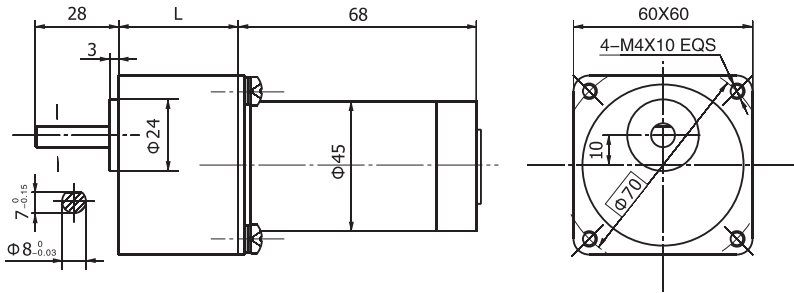
允许转矩范围：5N.m  
Permissible Load Range: 5N.m

### ● 产品特点和用途 Description of The Product

□60mm的一体式齿轮减速器，允许负载5.0N.m。合金结构钢齿轮，全部滚动轴承的配置。

□60mm integrated gearbox, with rated torque up to 5.0 N.m, alloy constructional steel gears, all equipped with ball bearings.

### ● 外形和安装尺寸 Dimensions



### ● 电动机主要技术参数 Motor Technical Data

电机型号 Type	额定电压 Rated voltage VDC	空载转速 No-load speed r/min	空载电流 No-load current A	额定转速 Rated speed r/min	额定转矩 Rated torque N.m	输出功率 Output power W	额定电流 Rated current A	堵转转矩 Stall torque N.m	堵转电流 Stall current A
45ZY68-2420	24	2000	0.20	1500	0.039	6	0.55	0.130	1.5
45ZY68-2430	24	3000	0.30	2500	0.043	10	0.80	0.176	2.7

### ● 齿轮减速电机主要技术参数 Gear Motor Technical Data

配置45ZY68-2420直流电机 (45ZY68-2420 DC Motor)

减速比 Reduction ratio	3	5	6	7.5	9	10	12.5	15	18	20	25	30	36	40	50	60	75	90	100	120	150
减速级数 Number of gear trains	2	2	2	2	2	2	2	2	2	3	3	3	3	3	3	4	4	4	4	4	4
减速器长度(L) Length(L) mm	32	32	32	32	32	32	32	32	32	40	40	40	40	40	40	40	40	40	40	40	40
空载转速 No-load speed r/min	667	400	333	267	222	200	160	133	111	100	80	67	56	50	40	33	27	22	20	17	13
额定转速 Rated speed r/min	500	300	250	200	167	150	120	100	83	75	60	50	42	38	30	25	20	17	15	13	10
额定转矩 Rated torque N.m	0.09	0.16	0.19	0.24	0.28	0.32	0.39	0.47	0.57	0.57	0.71	0.85	1.0	1.1	1.5	1.6	1.9	2.3	2.6	3.1	3.8
最大瞬间允许负载 Max. permissible load in a short time N.m	2.5	2.5	2.5	2.5	2.5	2.5	2.5	2.5	2.5	5.0	5.0	5.0	5.0	5.0	5.0	10	10	10	10	10	10
转 向 Direction of rotation	CW	CW	CW	CW	CW	CW	CW	CW	CW	CCW	CCW	CCW	CCW	CCW	CCW	CW	CW	CW	CW	CW	CW

配置45ZY68-2430直流电机 (45ZY68-2430 DC Motor)

减速比 Reduction ratio	3	5	6	7.5	9	10	12.5	15	18	20	25	30	36	40	50	60	75	90	100	120	150
减速级数 Number of gear trains	2	2	2	2	2	2	2	2	2	3	3	3	3	3	3	4	4	4	4	4	4
减速器长度(L) Length(L) mm	32	32	32	32	32	32	32	32	32	40	40	40	40	40	40	40	40	40	40	40	40
空载转速 No-load speed r/min	1000	600	500	400	333	300	240	200	167	150	120	100	83	75	60	50	40	33	30	25	20
额定转速 Rated speed r/min	833	500	417	333	278	250	200	167	139	125	100	83	69	63	50	42	33	28	25	21	17
额定转矩 Rated torque N.m	0.1	0.17	0.21	0.26	0.31	0.35	0.44	0.52	0.63	0.63	0.78	0.94	1.1	1.3	1.6	1.7	2.1	2.6	2.8	3.4	4.3
最大瞬间允许负载 Max. permissible load in a short time N.m	2.5	2.5	2.5	2.5	2.5	2.5	2.5	2.5	2.5	5.0	5.0	5.0	5.0	5.0	5.0	10	10	10	10	10	10
转 向 Direction of rotation	CW	CW	CW	CW	CW	CW	CW	CW	CW	CCW	CCW	CCW	CCW	CCW	CCW	CW	CW	CW	CW	CW	CW