

# 永磁直流齿轮减速电机PM DC Spur Gear Motor

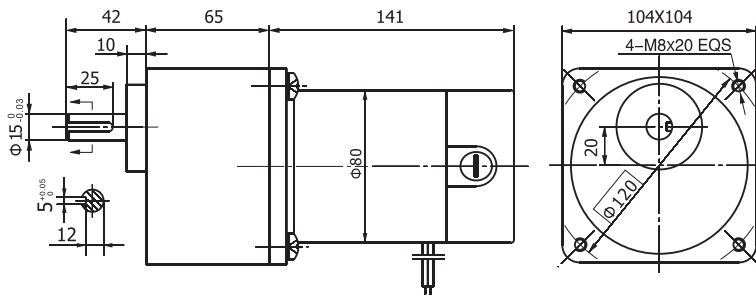
## 104JB300K/80ZY140

允许转矩范围：30N.m  
Permissible Load Range: 30N.m

### ● 产品特点和用途 Description of The Product

- 104mm的一体式齿轮减速器，允许负载30N.m。合金结构钢齿轮，全部滚动轴承的配置。
- 104mm integrated gearbox, with rated torque up to 30.0 N.m, alloy constructional steel gears, all equipped with ball bearings.

### ● 外形和安装尺寸 Dimensions



### ● 电动机主要技术参数 Motor Technical Data

电机型号 Type	额定电压 Rated voltage VDC	空载转速 No-load speed r/min	空载电流 No-load current A	额定转速 Rated speed r/min	额定转矩 Rated torque N.m	输出功率 Output power W	额定电流 Rated current A	堵转转矩 Stall torque N.m	堵转电流 Stall current A
80ZY140-2420	24	2000	0.3	1700	0.32	57	3.0	1.4	13.5
80ZY140-2435	24	3500	0.6	3000	0.35	110	6.5	1.6	29

### ● 齿轮减速电机主要技术参数 Gear Motor Technical Data

#### 配置80ZY140-2420直流电机 (80ZY140-2420 DC Motor)

减速比	Reduction ratio	3	5	7.5	10	12.5	15	20	25	30	50	75	100
减速级数	Number of gear trains	2	2	2	3	3	3	3	3	3	4	4	4
减速器长度(L)Length(L)	mm	65	65	65	65	65	65	65	65	65	65	65	65
空载转速	No-load speed r/min	667	400	267	200	160	133	100	80	67	40	27	20
额定转速	Rated speed r/min	567	340	227	170	136	113	85	68	57	34	23	17
额定转矩	Rated torque N.m	0.78	1.3	1.9	2.3	2.9	3.5	4.7	5.8	7.0	11	16	21
最大瞬间允许负载 Max. permissible load in a short time	N.m	10	10	10	30	30	30	30	30	30	60	60	60
转 向	Direction of rotation	CW	CW	CW	CCW	CCW	CCW	CCW	CCW	CCW	CW	CW	CW

#### 配置80ZY140-2435直流电机 (80ZY140-2435 DC Motor)

减速比	Reduction ratio	3	5	7.5	10	12.5	15	20	25	30	50	75	100
减速级数	Number of gear trains	2	2	2	3	3	3	3	3	3	4	4	4
减速器长度(L)Length(L)	mm	65	65	65	65	65	65	65	65	65	65	65	65
空载转速	No-load speed r/min	1167	700	467	350	280	233	175	140	117	70	47	35
额定转速	Rated speed r/min	1000	600	400	300	240	200	150	120	100	60	40	30
额定转矩	Rated torque N.m	0.85	1.4	2.1	2.6	3.2	3.8	5.1	6.4	7.7	12	17	23
最大瞬间允许负载 Max. permissible load in a short time	N.m	10	10	10	30	30	30	30	30	30	60	60	60
转 向	Direction of rotation	CW	CW	CW	CCW	CCW	CCW	CCW	CCW	CCW	CW	CW	CW