

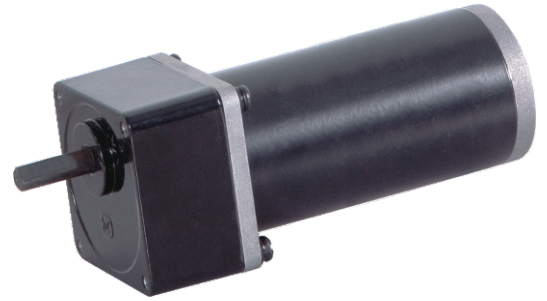
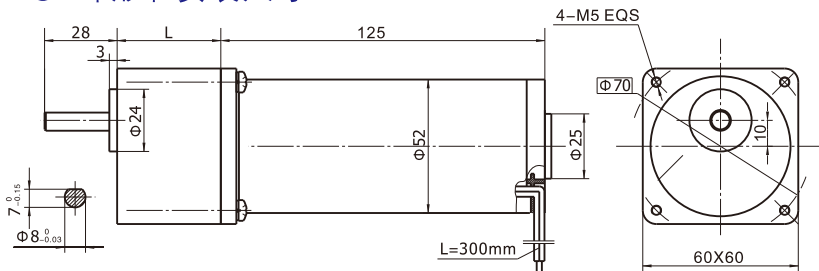
60JB50K/52ZY125

允许转矩范围: 5.0N.m
Permissible Load Range: 5.0N.m

● 产品特点和用途 Description of The Product

- 60mm的一体式齿轮减速器, 允许负载5.0N.m。合金结构钢齿轮, 全部滚动轴承的配置。
- 60mm integrated gearbox, with rated torque up to 5.0 N.m, alloy constructional steel gears, all equipped with ball bearings.

● 外形和安装尺寸 Dimensions



● 电动机主要技术参数 Motor Technical Data

电机型号 TYPE	额定电压 Rated voltage VDC	空载转速 No-load speed r/min	空载电流 No-load current A	额定转速 Rated speed r/min	额定转矩 Rated torque mN.m	输出功率 Output power W	额定电流 Rated current A	堵转转矩 Stall torque mN.m	堵转电流 Stall current A
52ZY125-2420	24	2000	0.40	1600	160	30	2.0	620	6.5
52ZY125-2430	24	3000	0.60	2400	190	50	3.5	700	11.5

● 齿轮减速电机主要技术参数 Gear Motor Technical Data

配置52ZY125-2420直流电机 (52ZY125-2420 DC Motor)

减速比 Reduction ratio	3	5	7.5	10	12.5	15	25	30	50
减速级数 Number of gear trains	2	2	2	2	2	2	3	3	3
减速器长度(L) Length(L) mm	32	32	32	32	32	32	40	40	40
空载转速 No-load speed r/min	667	400	267	200	160	133	80	67	40
额定转速 Rated speed r/min	533	320	213	160	128	106	64	53	32
额定转矩 Rated torque N.m	0.38	0.64	0.97	1.2	1.6	1.9	3.2	3.8	5.0
最大瞬间允许负载 Max. permissible load in a short time N.m	5	5	5	5	15	15	15	15	15
转向 Direction of rotation	CW	CW	CW	CW	CW	CW	CCW	CCW	CCW

配置52ZY125-2430直流电机 (52ZY125-2430 DC Motor)

减速比 Reduction ratio	3	5	7.5	10	12.5	15	25	30	50
减速级数 Number of gear trains	2	2	2	2	2	2	3	3	3
减速器长度(L) Length(L) mm	32	32	32	32	32	32	40	40	40
空载转速 No-load speed r/min	1000	600	400	300	240	200	120	100	60
额定转速 Rated speed r/min	800	480	320	240	192	160	96	80	48
额定转矩 Rated torque N.m	0.46	0.76	1.1	1.5	1.9	2.3	3.1	3.7	5.0
最大瞬间允许负载 Max. permissible load in a short time N.m	2.5	2.5	2.5	2.5	2.5	2.5	5.0	5.0	5.0
转向 Direction of rotation	CW	CW	CW	CW	CW	CW	CCW	CCW	CCW

● 电动机特性图 Motor Characteristic Figure

