

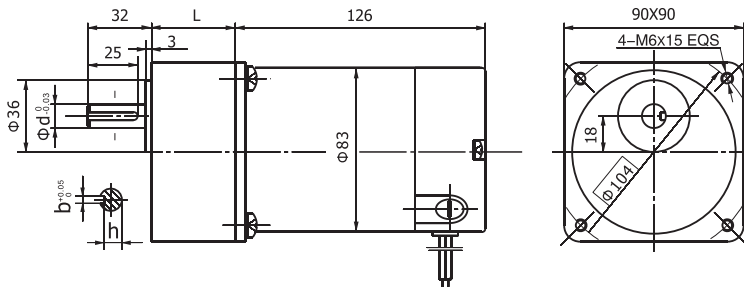
# 永磁直流齿轮减速电机 PM DC Spur Gear Motor

90JB200K/83ZY125
允许转矩范围: 20N.m  
Permissible Load Range: 20N.m

## ● 外形和安装尺寸 Dimensions

减速器出轴分两种类型 Reducer Output Shaft Configuration

- (1) 常规配置: 直径d=15, 键槽b=5、h=12
- (2) 可选配: 直径d=12, 键槽b=4、h=9.5
- (1) Standard Configuration: Diameter d=15, Keyway b=5、h=12
- (2) Optional: Diameter d=12, Keyway b=4、h=9.5



## ● 电动机主要技术参数 Motor Technical Data

电机型号 Type	额定电压 Rated voltage VDC	空载转速 No-load speed r/min	空载电流 No-load current A	额定转速 Rated speed r/min	额定转矩 Rated torque N.m	输出功率 Output power W	额定电流 Rated current A	堵转转矩 Stall torque N.m	堵转电流 Stall current A
83ZY125-2420	24	2000	0.8	1700	0.24	42	3.5	1.6	17
83ZY125-2430	24	3000	0.9	2500	0.30	77	4.6	1.8	20

## ● 齿轮减速电机主要技术参数 Gear Motor Technical Data

配置83ZY125-2420直流电机 (83ZY125-2420 DC Motor)

减速比 Reduction ratio	3	5	6	7.5	9	10	12.5	15	18	20	25	30	36	40	50	60	75	100	120
减速级数 Number of gear trains	1	2	2	2	2	2	2	2	3	3	3	3	3	4	4	4	4	4	4
减速器长度(L) Length(L) mm	42	42	42	42	42	42	42	42	60	60	60	60	60	60	60	60	60	60	60
空载转速 No-load speed r/min	667	400	333	267	222	200	160	133	111	100	80	67	56	50	40	33	27	20	16
额定转速 Rated speed r/min	567	340	283	227	189	170	136	113	94	85	68	57	47	43	34	28	23	17	14
额定转矩 Rated torque N.m	0.65	0.97	1.2	1.5	1.7	1.9	2.4	2.9	3.2	3.5	4.4	5.2	6.3	6.4	7.9	9.5	12	16	19
最大瞬间允许负载 Max. permissible load in a short time N.m	5.0	10	10	10	10	10	10	10	20	20	20	20	20	40	40	40	40	40	40
转向 Direction of rotation	CCW	CW	CW	CW	CW	CW	CW	CW	CCW	CCW	CCW	CCW	CCW	CW	CW	CW	CW	CW	CW

配置83ZY125-2430直流电机 (83ZY125-2430 DC Motor)

减速比 Reduction ratio	3	5	6	7.5	9	10	12.5	15	18	20	25	30	36	40	50	60	75	100	120
减速级数 Number of gear trains	1	2	2	2	2	2	2	2	3	3	3	3	3	4	4	4	4	4	4
减速器长度(L) Length(L) mm	42	42	42	42	42	42	42	42	60	60	60	60	60	60	60	60	60	60	60
空载转速 No-load speed r/min	1000	600	500	400	333	300	240	200	167	150	120	100	83	79	60	50	40	30	25
额定转速 Rated speed r/min	867	520	417	347	278	250	208	173	139	125	104	87	69	62	52	42	35	25	21
额定转矩 Rated torque N.m	0.81	1.2	1.5	1.8	2.2	2.4	3.0	3.6	3.9	4.4	5.5	6.6	7.9	8.0	9.9	10	15	20	24
最大瞬间允许负载 Max. permissible load in a short time N.m	5.0	10	10	10	10	10	10	10	20	20	20	20	20	40	40	40	40	40	40
转向 Direction of rotation	CCW	CW	CW	CW	CW	CW	CW	CW	CCW	CCW	CCW	CCW	CCW	CW	CW	CW	CW	CW	CW