

无刷直行星齿轮减速电机(内齿圈材质: 金属和粉末金属)

BLDC Planetary Gear Motor (Ring Gear Material: Metal and Powder Metal)

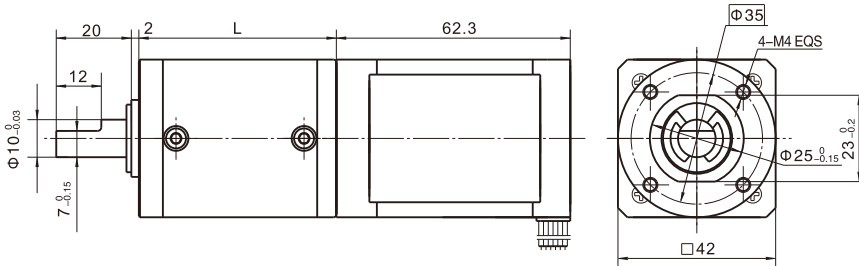
42JX150K/42BL60

Φ42 行星减速器, 允许转矩范围: 1N.m~15N.m
42mm OD Planetary Gearbox,
Permissible Load Range: 1N.m~15N.m

可在两种材质的内齿圈中进行选择: 粉末金属 (型号42JXF150K), 金属 (型号42JXE150K)
Ring gear can be selected within the two materials: Powder metal (Type: 42JXF150K), Metal (Type: 42JXE150K)



● 外形和安装尺寸 Dimensions



● 无刷电动机主要技术参数 Brushless Motor Technical Data

电机型号 TYPE	极数 Number of poles	相数 Number of phase	额定电压 Rated voltage VDC	空载转速 No-load speed r/min	额定转速 Rated speed r/min	额定转矩 Rated torque mN.m	额定功率 Rated power W	峰值扭矩 Peak torque mN.m	峰值电流 Peak current A	电阻 Line to line resistance ohms	电感 Line to line inductance mH
42BL60-2440	10	3	24	4000	3000	160	50	650	11.8	1.1	0.96

● 无刷行星齿轮减速电机主要技术参数 Brushless Gear Motor Technical Data

配置42BL60-2440无刷直流电机 (42BLS60-2440 BLDC Motor)

减速比	Reduction ratio	3.5	14	21	49	84	104	126
减速级数	Number of gear trains	1	2	2	3	3	3	3
减速器长度(L)	Length(L)	mm	32.5	39.2	39.2	46	46	46
空载转速	No-load speed	r/min	1143	286	190	82	48	38
额定转速	Rated speed	r/min	857	214	143	61	36	29
额定转矩	Rated torque	N.m	0.50	1.8	2.7	5.7	9.8	12
最大瞬间允许负载	Max. permissible load in a short time	N.m	3	12	12	25	25	25

● 接线方式 Wire Diagram

U	V	W	Vcc	Ha	Hb	Hc	GND
黄 Yellow	红 Red	黑 Black	红 Red	蓝 Blue	绿 Green	白 White	黑 Black
20AWG UL1430			26AWG UL1430				