

无刷直行星齿轮减速电机(内齿圈材质: 金属和粉末金属)

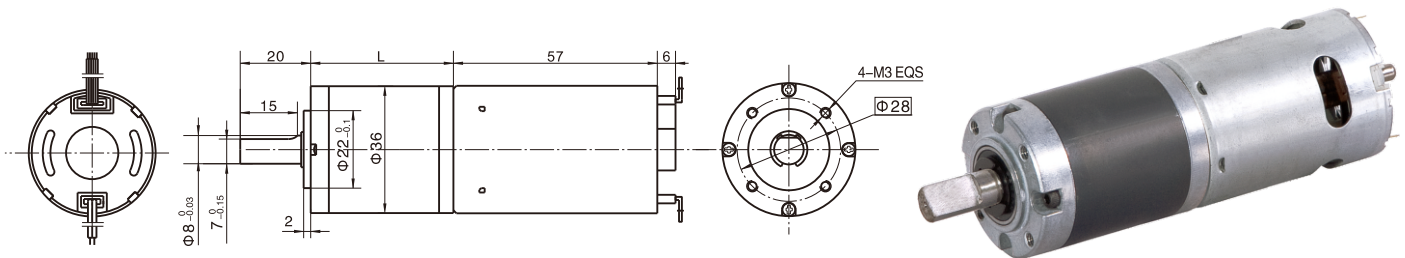
BLDC Planetary Gear Motor (Ring Gear Material: Metal and Powder Metal)

**36JXE30K/36ZWNP57**  $\Phi 36$  行星减速器, 允许转矩范围: 0.3N.m~3N.m  
36mm OD Planetary Gearbox,  
Permissible Load Range: 0.3N.m~3N.m

无刷直流电动机, 3相4极, 内置驱动器 3 phase 4 poles brushless DC motor, with built-in driver

可在两种材质的内齿圈中进行选择: 粉末金属 (型号36JXF30K), 金属 (型号36JXE30K)  
Ring gear can be selected within the two materials: Powder metal (Type: 36JXF30K), Metal (Type: 36JXE30K)

● 外形和安装尺寸 Dimensions



● 无刷电动机主要技术参数 Brushless Motor Technical Data

电机型号 TYPE	极数 Number of poles	相数 Number of phase	额定电压 Rated voltage VDC	空载转速 No-load speed r/min	额定转速 Rated speed r/min	额定转矩 Rated torque mN.m	额定功率 Rated power W	启动转矩 Started torque mN.m
36ZWNP57-2450	4	3	24	5000	4200	40	18	257

● 无刷行星齿轮减速电机主要技术参数 Brushless Gear Motor Technical Data

配置36ZWNP57-2450无刷直流电机 (36ZWNP57-2450 BLDC Motor)

减速比 Reduction ratio	3.7	5.2	14	19	27	51	71	100	139	189
减速级数 Number of gear trains	1	1	2	2	2	3	3	3	3	4
减速器长度(L) Length(L) mm	26.5	26.5	33.6	33.6	33.6	40.5	40.5	40.5	40.5	47.4
空载转速 No-load speed r/min	1348	965	357	263	185	98	70	50	36	26
额定转速 Rated speed r/min	1132	811	300	221	156	82	59	42	30	22
额定转矩 Rated torque N.m	0.13	0.19	0.45	0.62	0.87	1.5	2.1	2.9	3	3
最大瞬间允许负载 Max. permissible load in a short time N.m	1.0	1.0	3.5	3.5	3.5	7.5	7.5	7.5	7.5	9

● 接线方式 Wire Diagram

正极+ Phase V	负极- Phase W	转向 Reversing	调速 Speed Control	制动 Braking	+5V输出 Output	脉冲输出 Pulse Output
红 Red	黑 Black	棕 Brown	橙 Orange	白 White	绿 Green	蓝 Blue

棕色与黑色导通为CCW, 断开为CW。  
白色与黑色导通为停止。  
橙色为调速功能。  
绿色与棕色导通全速工作。  
蓝色线为脉冲输出, 电机每转一周为2个脉冲输出。

Brown wire connects with black wire for CCW and disconnects for CW.  
White wire connects with black wire for stopping.  
Orange wire is for speed control.  
Green wire connects with brown wire for full-speed working.  
Blue wire is for pulse output, motor outputs 2 pulses per revolution.