

无刷直行星齿轮减速电机(内齿圈材质: 金属和粉末金属)

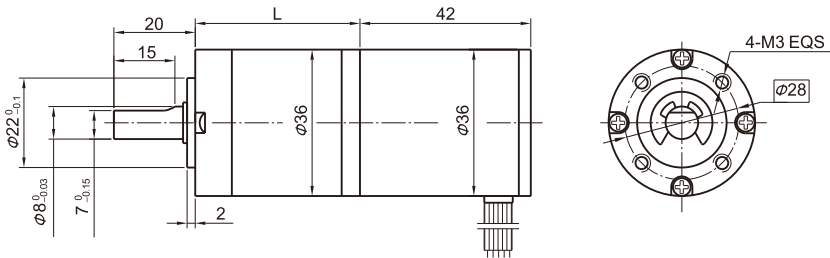
BLDC Planetary Gear Motor (Ring Gear Material: Metal and Powder Metal)

36JXE30K/36ZWN42

Φ36 行星减速器, 允许转矩范围: 0.3N.m~3.0N.m
36mm OD Planetary Gearbox,
Permissible Load Range: 0.3N.m~3.0N.m

可在两种材质的内齿圈中进行选择: 粉末金属(型号36JXF30K), 金属(型号36JXE30K)
Ring gear can be selected within the two materials: Powder metal (Type: 36JXF30K), Metal (Type: 36JXE30K)

● 外形和安装尺寸 Dimensions



● 无刷电动机主要技术参数 Brushless Motor Technical Data

电机型号 TYPE	极数 Number of poles	相数 Number of phase	额定电压 Rated voltage VDC	空载转速 No-load speed r/min	额定转速 Rated speed r/min	额定转矩 Rated torque mN.m	额定功率 Rated power W	峰值扭矩 Peak torque mN.m
36ZWN42-2430	8	3	24	3000	2100	32	7	160
36ZWN42-2440	8	3	24	4000	2800	36	10	180

● 无刷行星齿轮减速电机主要技术参数 Brushless Gear Motor Technical Data

配置36ZWN42-2430无刷直流电机 (36ZWN42-2430 BLDC Motor)

减速比	Reduction ratio	3.7	5.2	14	19	27	51	71	100	139	189	264
减速级数	Number of gear trains	1	1	2	2	2	3	3	3	3	4	4
减速器长度(L)	Length(L) mm	26.5	26.5	33.6	33.6	33.6	40.5	40.5	40.5	40.5	47.4	47.4
空载转速	No-load speed r/min	809	576	214	158	111	59	42	30	22	16	11
额定转速	Rated speed r/min	566	405	150	111	78	41	30	23	18	13	8.0
额定转矩	Rated torque N.m	0.09	0.13	0.31	0.42	0.59	1.0	1.4	2.0	2.5	3	3
最大瞬间允许负载 Max. permissible load in a short time	N.m	1.0	1.0	3.5	3.5	3.5	7.5	7.5	7.5	7.5	9	9

配置36ZWN42-2440无刷直流电机 (36ZWN42-2440 BLDC Motor)

减速比	Reduction ratio	3.7	5.2	14	19	27	51	71	100	139	189	264
减速级数	Number of gear trains	1	1	2	2	2	3	3	3	3	4	4
减速器长度(L)	Length(L) mm	26.5	26.5	33.6	33.6	33.6	40.5	40.5	40.5	40.5	47.4	47.4
空载转速	No-load speed r/min	1078	772	286	211	148	78	56	40	29	21	15
额定转速	Rated speed r/min	755	541	200	147	104	55	39	30	23	18	14
额定转矩	Rated torque N.m	0.10	0.14	0.34	0.46	0.66	1.1	1.6	2.2	2.5	3	3
最大瞬间允许负载 Max. permissible load in a short time	N.m	1.0	1.0	3.5	3.5	3.5	7.5	7.5	7.5	7.5	9	9

● 接线方式 Wire Diagram

U	V	W	Vcc	Ha	Hb	Hc	GND
红 Red	棕 Brown	黑 Black	蓝 Blue	黄 Yellow	棕 Brown	红 Red	绿 Green
22AWG UL1007			26AWG UL1007				