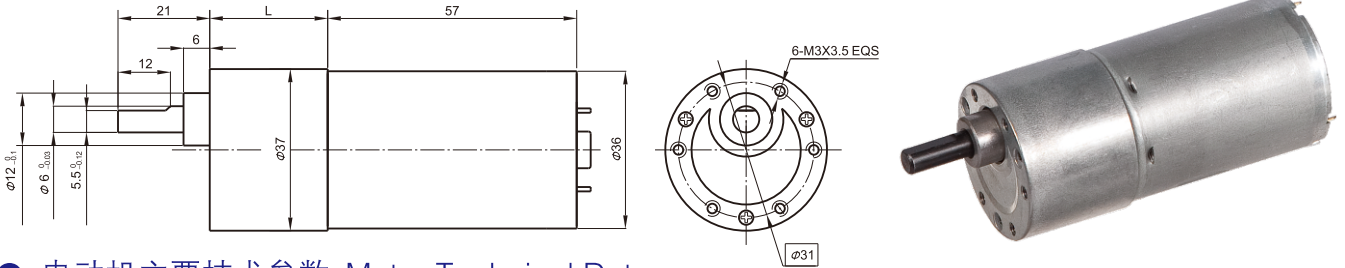


37JBE10K/36ZY57 $\Phi 37$ 行星减速器, 允许转矩范围: 1.0N.m
 37mm OD Planetary Gearbox,
 Permissible Load Range: 1.0N.m

● 外形和安装尺寸 Dimensions



● 电动机主要技术参数 Motor Technical Data

电机型号 TYPE	额定电压 Rated voltage VDC	空载转速 No-load speed r/min	空载电流 No-load current mA	额定转速 Rated speed r/min	额定转矩 Rated torque mN.m	输出功率 Output power W	额定电流 Rated current A	堵转力矩 Stall torque mN.m	堵转电流 Stall current A
36ZY57-2436	24	3600	120	3000	17	5	0.50	89	2.0
36ZY57-2442	24	4200	120	3600	19	7	0.52	124	2.7

● 齿轮减速电机主要技术参数 Gear Motor Technical Data

配置36ZY57-2436直流电机 (36ZY57-2436 DC Motor)

减速比 Reduction ratio	6	10	18	30	50	75	100	150
减速级数 Number of gear trains	2	2	3	3	4	4	4	5
减速器长度(L) Length(L) mm	21.5	21.5	26.5	26.5	29	29	29	31.5
空载转速 No-load speed r/min	600	360	200	120	72	48	36	24
额定转速 Rated speed r/min	500	300	167	100	60	40	30	20
额定转矩 Rated torque N.m	0.09	0.14	0.22	0.37	0.61	0.78	1	1
最大瞬间允许负载 Max. permissible load in a short time N.m	0.5	0.5	1	1	2	2	2	3
转向 Direction of rotation	CCW	CCW	CW	CW	CCW	CCW	CCW	CW

配置36ZY57-2442直流电机 (36ZY57-2442 DC Motor)

减速比 Reduction ratio	6	10	18	30	50	75	100	150
减速级数 Number of gear trains	2	2	3	3	4	4	4	5
减速器长度(L) Length(L) mm	21.5	21.5	26.5	26.5	29	29	29	31.5
空载转速 No-load speed r/min	700	420	233	140	84	56	42	28
额定转速 Rated speed r/min	600	360	200	120	72	48	36	24
额定转矩 Rated torque N.m	0.10	0.16	0.25	0.41	0.68	0.87	1	1
最大瞬间允许负载 Max. permissible load in a short time N.m	0.5	0.5	1	1	2	2	2	3
转向 Direction of rotation	CCW	CCW	CW	CW	CCW	CCW	CCW	CW

● 电动机特性图 Motor Characteristic Figure

