

行星齿轮减速器 (内齿圈材质: 金属和粉末金属)

Planetary Gearbox (Ring Gear Material: Metal and Powder Metal)

36JXE30K

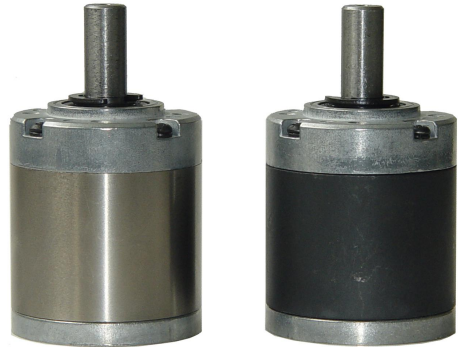
Φ36 行星减速器, 允许转矩范围: 0.3N.m~3.0N.m

36mm Planetary Gearbox

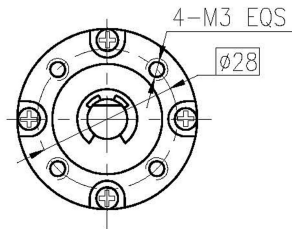
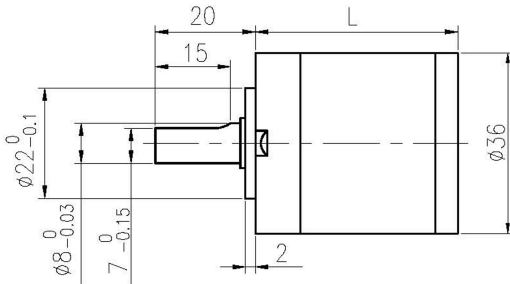
Permissible Load Range: 0.3N.m~3.0N.m

可在两种材料的内齿圈中进行选择: 粉末金属 (型号 36JMF30K), 金属 (型号 36JM30K)
 Ring gear materials are optional: Powder metal (Type: 36JMF30K), Metal (Type: 36JM30K)

内齿圈材料 Ring material	JM 型: 金属 Metal JMF 型: 金属粉末 Powder metal
输出轴轴承形式 Bearing at output	滚动轴承 Ball bearings
最大允许径向负载 (离法兰 10mm 处) Max. Radial load (10mm from flange)	100N
最大允许轴向负载 Max. shaft axial load	50N
径向间隙 (测量点尽量接近法兰) Radial play of shaft (near to flange)	≤0.07 mm
轴向间隙 Axial play of shaft	≤0.3 mm
背隙 (无负载时) Backlash at no-load	≤2.5°
输出轴最大承受压入力 Shaft press fit force, max	120N



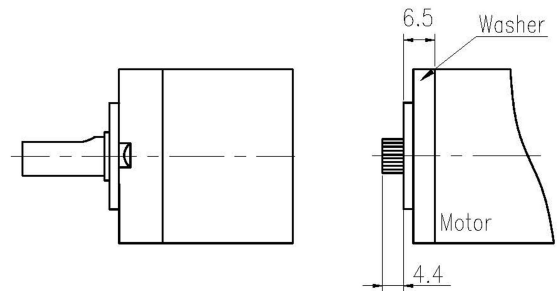
外形和安装尺寸 Dimensions



电机轴齿轮型式 Pinion Specifications

模数 Module	0.5			
齿数 No. of teeth	11		17	
压力角 Pressure angle	20°			
孔径 Hole diameter	Φ2.98 Φ3.16 Φ3.48			
减速比 Reduction ratio	1/5.18 1/19 1/27 1/71 1/100 1/100 1/139 1/264 1/369 1/516 1/720	1/254 1/306 1/354 1/427 1/495 1/596	1/3.71 1/14 1/51 1/189	1/182 1/219

电机轴齿轮装配 Motor Installation



标准减速比型式 Gearbox Specifications

减速比 Reduction ratio	实际减速比 Exact reduction ratio	额定允许负载 Rated tolerance torque	瞬间允许负载 Max momentary tolerance torque	效率 Efficiency	L (mm)	重量 (g) Weight(g)
1/3.7 1/5.2	1/3.71 1/5.18	0.3 N.m	1.0 N.m	90 %	26.5±0.5	168
1/14 1/19 1/27	1/13.76 1/19.22 1/26.83	1.2 N.m	3.5 N.m	81 %	33.6±0.5	207
1/51 1/71 1/100 1/139	1/51.06 1/71.30 1/99.55 1/138.99	2.5 N.m	7.5 N.m	73 %	40.5±0.5	248
1/182 1/219 1/254 1/306 1/354 1/427 1/495 1/596	1/181.79 1/219.07 1/253.82 1/305.87 1/354.39 1/427.06 1/494.81 1/596.27	3.0 N.m	9.0 N.m	66 %	47.4±0.5	296

Operating ambient humidity: 20%~85%RH Operating ambient temp.: -20°C~+80°C(optional -35°C~+80°C)

Input & output with same rotation direction Motor Max. input speed < 8000rpm