

52ZY95永磁直流电动机

52ZY95 PMDC Motor

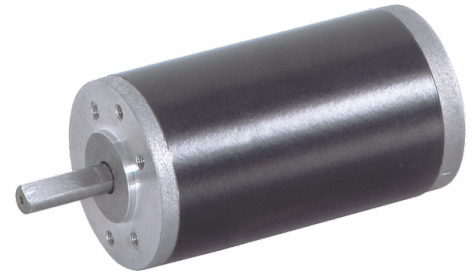
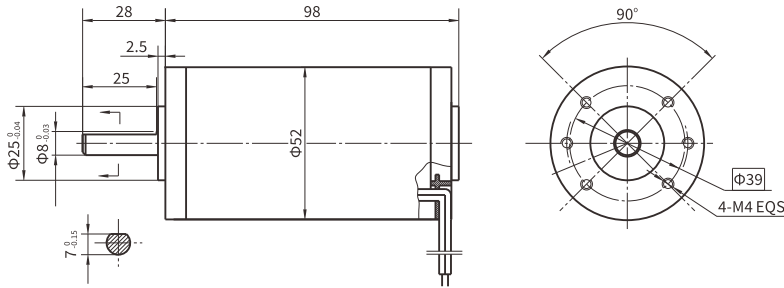
产品特点 and 用途

Description of The Product

直径 52mm 的永磁直流电动机, 密封结构, 适合于各种要求低噪音的使用场合。
52MM OD PMDC motor, totally enclosed, used in occasions which require motors with low noise.

外形和安装尺寸

Dimensions



电动机主要技术参数

Motor Technical Data

电机型号 Type	额定电压 Rated Voltage VDC	空载转速 No-load Speed r/min	空载电流 No-load Current A	额定转速 Rated Speed r/min	额定转矩 Rated Torque mN.m	输出功率 Output Power W	额定电流 Rated Current A	堵转力矩 Stall Torque mN.m	堵转电流 Stall current A
52ZY95-2420	24	2000	0.30	1600	80	15	1.2	400	4.2
52ZY95-2430	24	3000	0.40	2400	100	25	1.8	410	6.0
52ZY95-2440	24	4000	0.50	3200	130	40	3.0	585	11

52ZY125永磁直流电动机

52ZY125 PMDC Motor

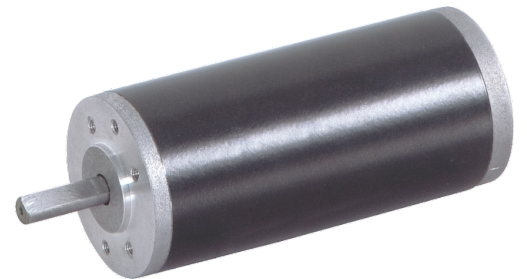
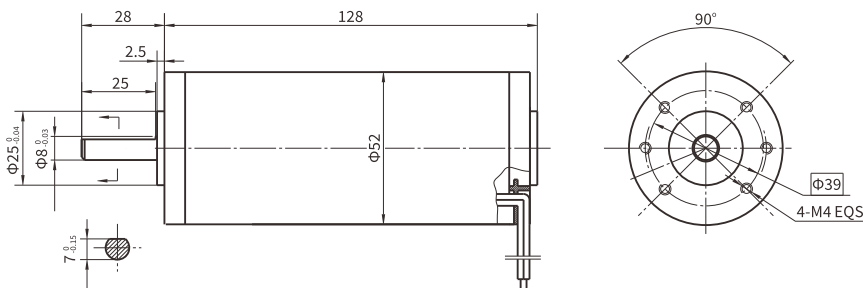
产品特点 and 用途

Description of The Product

直径 52mm 的永磁直流电动机, 密封结构, 适合于各种要求低噪音的使用场合。
52MM OD PMDC motor, totally enclosed, used in occasions which require motors with low noise.

外形和安装尺寸

Dimensions



电动机主要技术参数

Motor Technical Data

电机型号 Type	额定电压 Rated Voltage VDC	空载转速 No-load Speed r/min	空载电流 No-load Current A	额定转速 Rated Speed r/min	额定转矩 Rated Torque mN.m	输出功率 Output Power W	额定电流 Rated Current A	堵转力矩 Stall Torque mN.m	堵转电流 Stall current A
52ZY125-2420	24	2000	0.40	1600	160	30	2.0	620	6.5
52ZY125-2430	24	3000	0.60	2400	190	50	3.5	700	11.5
52ZY125-2440	24	4000	0.80	3200	220	80	4.5	838	16.4