

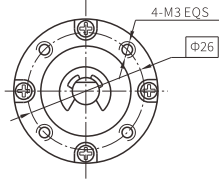
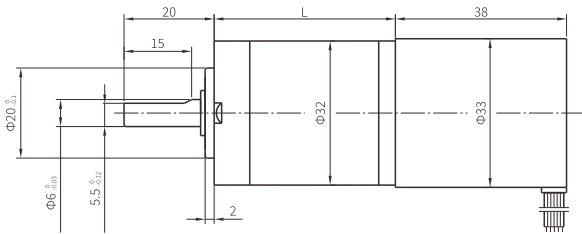
无刷直流行星齿轮减速电机 (内齿圈材质:金属)
BLDC Planetary Gear Motor (Ring Gear Material: Metal)

32JXE30K/33ZWN38

Φ32行星减速器, 允许转矩范围:0.3N.m~3.0N.m
 32mm OD Planetary Gearbox,
 Permissible Load Range: 0.3N.m~3.0N.m

■ 外形和安装尺寸

Dimensions



■ 无刷电动机主要技术参数

Brushless Motor Technical Data

电机型号 Type	极数 Number of poles	相数 Number of phase	额定电压 Rated Voltage VDC	空载转速 No-load Speed r/min	额定转速 Rated Speed r/min	额定转矩 Rated Torque mN.m	额定功率 Rated Power W	额定电流 Rated Current A	峰值转矩 Peak Torque mN.m	峰值电流 Peak Current A	电阻 Line to line resistance ohms	电感 Line to line inductance mH
33ZWN38-2445	4	3	24	4500	3000	22	7	0.42	66	1.4	14.2	7

■ 无刷行星齿轮减速电机主要技术参数

Brushless Gear Motor Technical Data

配置33ZWN38-2445无刷直流电机(33ZWN38-2445 BLDC Motor)

减速比 Reduction ratio	3.7	5.2	14	19	27	51	71	100	139	189	264	369
减速级数 Number of gear trains	1	1	2	2	2	3	3	3	3	4	4	4
减速器长度(L) Length mm	25.7	25.7	32.8	32.8	32.8	39.7	39.7	39.7	39.7	46.6	46.6	46.6
空载速度 No-load speed r/min	1213	869	321	237	167	88	63	45	32	24	17	12
额定转速 Rated speed r/min	809	579	214	158	111	59	42	30	22	16	11	8.1
额定转矩 Rated torque N.m	0.073	0.10	0.25	0.34	0.48	0.82	1.1	1.6	2.2	2.7	3	3
最大瞬间允许负载 Max. permissible load in a short time N.m	1.0	1.0	3.5	3.5	3.5	7.5	7.5	7.5	7.5	9.0	9.0	9.0

■ 接线方式

Wire Diagram

U	V	W	Vcc	Ha	Hb	Hc	GND
电机 Motor			霍尔 Hall				