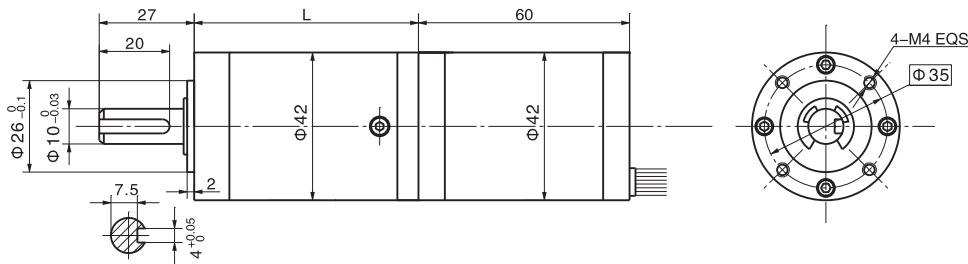


无刷直行星齿轮减速电机 BLDC Planetary Gear Motor

42JX100K/42ZWN60

Φ42加强型减速器, 允许转矩范围: 1N.m~10N.m
42mm OD Reinforced Gearbox,
Permissible Load Range: 1N.m~10N.m

● 外形和安装尺寸 Dimensions



● 无刷电动机主要技术参数 Brushless Motor Technical Data

电机型号 Type	额定电压 Rated voltage VDC	空载转速 No-load speed r/min	空载电流 No-load current A	额定转速 Rated speed r/min	额定转矩 Rated torque N.m	额定电流 Rated current A	输出功率 Output power W	峰值力矩 Biggest torque N.m
42ZWN60-2420	24	2000	0.12	1400	0.045	0.60	6.5	0.12
42ZWN60-2430	24	3000	0.16	2100	0.06	1.10	13	0.18

● 无刷行星齿轮减速电机主要技术参数 Brushless Gear Motor Technical Data

配置42ZWN60-2420无刷直流电机 (42ZWN60-2420 BLDC Motor)

减速比 Reduction ratio	3.71	5.18	14	19	27	51	71	100	139	189	264	369
减速级数 Number of gear trains	1	1	2	2	2	3	3	3	3	4	4	4
减速器长度(L) Length(L) mm	41.3	41.3	51.6	51.6	51.6	64.4	64.4	64.4	64.4	74.7	74.7	74.7
空载转速 No-load speed r/min	539	386	143	105	74	39	28	20	14	11	7.6	5.4
额定转速 Rated speed r/min	377	270	100	74	52	27	20	14	10	7.4	5.3	3.8
额定转矩 Rated torque N.m	0.15	0.21	0.51	0.69	0.98	1.7	2.3	3.3	4.6	5.5	7.7	10
最大瞬间允许负载 Max. permissible load in a short time N.m	3.0	3.0	12	12	12	25	25	25	25	30	30	30

配置42ZWN60-2430无刷直流电机 (42ZWN60-2430 BLDC Motor)

减速比 Reduction ratio	3.71	5.18	14	19	27	51	71	100	139	189	264	369
减速级数 Number of gear trains	1	1	2	2	2	3	3	3	3	4	4	4
减速器长度(L) Length(L) mm	41.3	41.3	51.6	51.6	51.6	64.4	64.4	64.4	64.4	74.7	74.7	74.7
空载转速 No-load speed r/min	809	579	214	158	111	59	42	30	22	16	11	8
额定转速 Rated speed r/min	566	405	150	111	78	41	30	21	15	11	9	6
额定转矩 Rated torque N.m	0.20	0.28	0.68	0.92	1.3	2.2	3.1	4.3	6.0	7.4	10	10
最大瞬间允许负载 Max. permissible load in a short time N.m	3.0	3.0	12	12	12	25	25	25	25	30	30	30