

永磁直流行星齿轮电机 PM DC Planetary Gear Motor

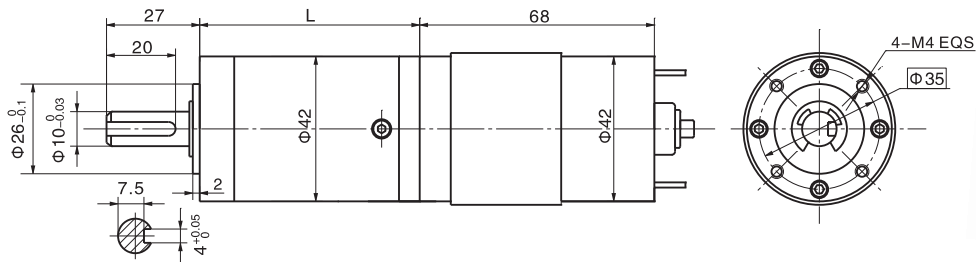
42JX100K/42ZY68P

Φ42加强型减速器, 允许转矩范围: 1N.m~10N.m
42mm OD Reinforced Gearbox, Permissible Load Range: 1N.m~10N.m

45JX100K/42ZY68P

Φ45加强型减速器, 允许转矩范围: 1N.m~10N.m
45mm OD Reinforced Gearbox, Permissible Load Range: 1N.m~10N.m

● 外形和安装尺寸 Dimensions



● 电动机主要技术参数 Motor Technical Data

电机型号 Type	额定电压 Rated voltage VDC	空载转速 No-load speed r/min	空载电流 No-load current A	额定转速 Rated speed r/min	额定转矩 Rated torque mN.m	输出功率 Output power W	额定电流 Rated current A	堵转转矩 Stall torque mN.m	堵转电流 Stall current A
42ZY68P-2420	24	2000	0.15	1700	50	8.7	0.6	220	2.0
42ZY68P-2430	24	3000	0.17	2200	40	9.0	1.0	150	2.3

电机型号中增加代号P, 表示配置了屏蔽罩, 直径为Φ45MAX。P - Shielding Case, OD 45mm.

● 齿轮减速电机主要技术参数 Gear Motor Technical Data

配置42ZY68P-2420直流电机 (42ZY68P-2420 DC Motor)

减速比 Reduction ratio	3.71	5.18	14	19	27	51	71	100	139	189	264	369	516
减速级数 Number of gear trains	1	1	2	2	2	3	3	3	3	4	4	4	4
减速器长度(L) Length(L) mm	41.3	41.3	51.6	51.6	51.6	64.4	64.4	64.4	64.4	74.7	74.7	74.7	74.7
空载转速 No-load speed r/min	539	386	143	105	74	39	28	20	14	11	7.6	5.4	3.9
额定转速 Rated speed r/min	458	328	121	89	63	33	24	17	12	9.0	6.4	4.6	3.3
额定转矩 Rated torque N.m	0.17	0.23	0.57	0.77	1.1	1.9	2.6	3.7	5.1	6.1	8.6	10	10
最大瞬间允许负载 Max. permissible load in a short time N.m	3	3	12	12	12	25	25	25	25	30	30	30	30

配置42ZY68P-2430直流电机 (42ZY68P-2430 DC Motor)

减速比 Reduction ratio	3.71	5.18	14	19	27	51	71	100	139	189	264	369	516
减速级数 Number of gear trains	1	1	2	2	2	3	3	3	3	4	4	4	4
减速器长度(L) Length(L) mm	41.3	41.3	51.6	51.6	51.6	64.4	64.4	64.4	64.4	74.7	74.7	74.7	74.7
空载转速 No-load speed r/min	809	579	214	158	111	59	42	30	22	16	11	8.1	5.8
额定转速 Rated speed r/min	593	425	157	116	81	43	31	22	16	12	8.3	6.0	4.3
额定转矩 Rated torque N.m	0.13	0.19	0.45	0.62	0.87	1.5	2.1	2.9	4.1	4.9	6.9	9.6	10
最大瞬间允许负载 Max. permissible load in a short time N.m	3	3	12	12	12	25	25	25	25	30	30	30	30