

无刷直行星齿轮减速电机 BLDC Planetary Gear Motor

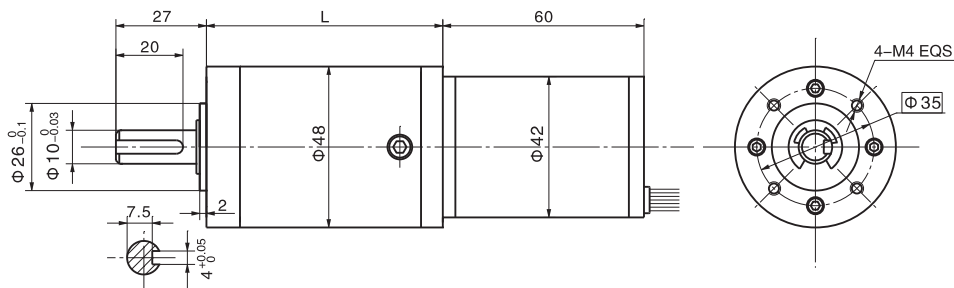
48JXT200K/42ZWN60

Φ48超大力矩型减速器, 允许转矩范围: 20N.m
48mm OD Large Torque Gearbox, Permissible Load Range: 20N.m

48JXGT200K/42ZWN60

Φ48长寿命、超大力矩型减速器, 允许转矩范围: 20N.m
48mm OD Long Life & Large Torque Gearbox, Permissible Load Range: 20N.m

外形和安装尺寸 Dimensions



无刷电动机主要技术参数 Brushless Motor Technical Data

电机型号 Type	额定电压 Rated voltage VDC	空载转速 No-load speed r/min	空载电流 No-load current A	额定转速 Rated speed r/min	额定转矩 Rated torque N.m	额定电流 Rated current A	输出功率 Output power W	峰值力矩 Biggest torque N.m
42ZWN60-2420	24	2000	0.12	1400	0.045	0.60	6.5	0.12
42ZWN60-2430	24	3000	0.16	2100	0.06	1.10	13	0.18

无刷行星齿轮减速电机主要技术参数 Brushless Gear Motor Technical Data

配置42ZWN60-2420无刷直流电机 (42ZWN60-2420 BLDC Motor)

减速比 Reduction ratio	247	316	403	515	944	1206	1540	2510
减速级数 Number of gear trains	4	4	4	4	5	5	5	5
减速器长度(L) Length(L) mm	70.4	70.4	70.4	70.4	80.6	80.6	80.6	80.6
空载转速 No-load speed r/min	8.1	6.3	5.0	3.9	2.1	1.7	1.3	0.8
额定转速 Rated speed r/min	5.7	4.4	3.5	2.7	1.5	1.2	0.9	0.6
额定转矩 Rated torque N.m	7.3	9.4	12	15	20	20	20	20
最大瞬间允许负载 Max. permissible load in a short time N.m	60	60	60	60	60	60	60	60

配置42ZWN60-2430无刷直流电机 (42ZWN60-2430 BLDC Motor)

减速比 Reduction ratio	247	316	403	515
减速级数 Number of gear trains	4	4	4	4
减速器长度(L) Length(L) mm	70.4	70.4	70.4	70.4
空载转速 No-load speed r/min	12	9.5	7.4	5.8
额定转速 Rated speed r/min	8.5	6.6	5.2	4.1
额定转矩 Rated torque N.m	9.8	12.5	16	20
最大瞬间允许负载 Max. permissible load in a short time N.m	60	60	60	60