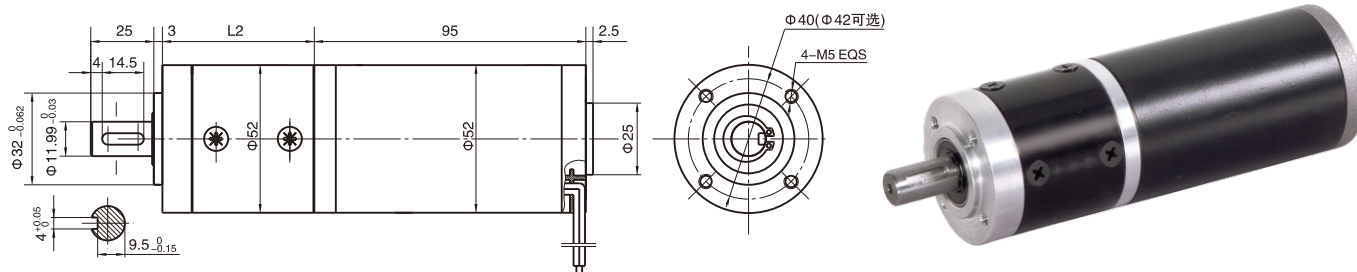


永磁直行星齿轮电机 (内齿圈材质: 金属)

PM DC Planetary Gear Motor (Ring Gear Material: Metal)

52JXM200K/52ZY95 $\Phi 52$ 行星减速器, 允许转矩范围: 2 N.m~20N.m
 52mm OD Reinforced Gearbox,
 Permissible Load Range: 2 N.m~20N.m

● 外形和安装尺寸 Dimensions



● 电动机主要技术参数 Motor Technical Data

电机型号 TYPE	额定电压 Rated voltage VDC	空载转速 No-load speed r/min	空载电流 No-load current A	额定转速 Rated speed r/min	额定转矩 Rated torque mN.m	输出功率 Output power W	额定电流 Rated current A	堵转力矩 Stall torque mN.m	堵转电流 Stall current A
52ZY95-2420	24	2000	0.2	1600	80	15	1.2	400	4.2
52ZY95-2430	24	3000	0.3	2400	100	25	1.8	410	6.0
52ZY95-2440	24	4000	0.4	3200	130	40	3.0	585	11

● 齿轮减速电机主要技术参数 Gear Motor Technical Data

配置52ZY95-2420直流电机 (52ZY95-2420 DC Motor)

减速比 Reduction ratio	4.5	6.25	8	20	28	34	50	64	91	127	162	225	312
减速级数 Number of gear trains	1	1	1	2	2	2	2	2	3	3	3	3	3
减速器长度(L) Length(L) mm	49	49	49	65	65	65	65	65	80	80	80	80	80
空载转速 No-load speed r/min	444	320	250	100	71	59	40	31	22	16	12	9	6
额定转速 Rated speed r/min	400	256	200	80	57	47	32	25	17	12	9	7	5
额定转矩 Rated torque N.m	0.32	0.45	0.58	1.3	1.8	2.2	3.2	4.1	5.3	7.4	9.5	13.1	18.2
最大瞬间允许负载 Max. permissible load in a short time N.m	6	6	6	25	25	25	25	25	50	50	50	50	50

配置52ZY95-2430直流电机 (52ZY95-2430 DC Motor)

减速比 Reduction ratio	4.5	6.25	8	20	28	34	50	64	91	127	162	225	312
减速级数 Number of gear trains	1	1	1	2	2	2	2	2	3	3	3	3	3
减速器长度(L) Length(L) mm	49	49	49	65	65	65	65	65	80	80	80	80	80
空载转速 No-load speed r/min	666	480	375	150	106	88	60	46	33	24	18	13	9
额定转速 Rated speed r/min	600	384	300	120	85	70	48	37	25	18	13	10	7.5
额定转矩 Rated torque N.m	0.4	0.56	0.72	1.6	2.2	2.7	4	5.1	6.6	9.2	11.8	16.3	22
最大瞬间允许负载 Max. permissible load in a short time N.m	6	6	6	25	25	25	25	25	50	50	50	50	50

● 电动机特性图 Motor Characteristic Figure

