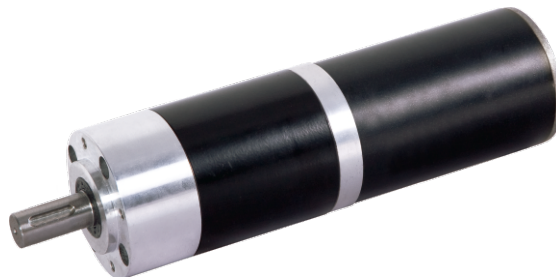
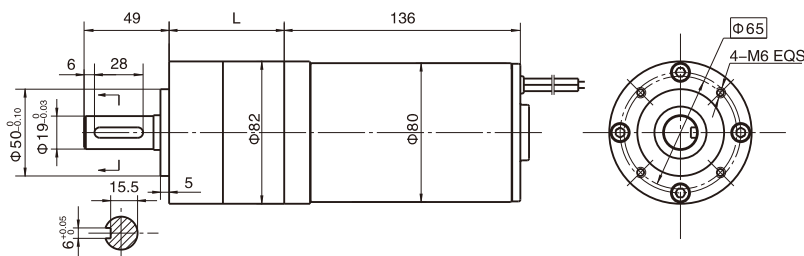


永磁直行星齿轮电机 (内齿圈材质: 金属)

PM DC Planetary Gear Motor (Ring Gear Material: Metal)

82JX1200K/80ZY125 $\Phi 82$ 行星齿轮减速器, 允许转矩范围: 120 N.m
82mm OD Planetary Gearhead,
Permissible Load Range: 120 N.m

● 外形和安装尺寸 Dimensions



● 电动机主要技术参数 Motor Technical Data

电机型号 TYPE	额定电压 Rated voltage VDC	空载转速 No-load speed r/min	空载电流 No-load current A	额定转速 Rated speed r/min	额定转矩 Rated torque mN.m	输出功率 Output power W	额定电流 Rated current A	堵转力矩 Stall torque N.m	堵转电流 Stall current A
80ZY125-2420	24	2000	0.7	1650	440	76	5	2.5	22
80ZY125-2435	24	3500	1.6	2750	950	274	17	4.4	30

● 齿轮减速电机主要技术参数 Gear Motor Technical Data

配置80ZY125-2420直流电机 (80ZY125-2420 DC Motor)

减速比 Reduction ratio	4	7	14	19	25	32	50	64	71	90	116	152	195	329
减速级数 Number of gear trains	1	1	2	2	2	2	3	3	3	3	3	3	3	3
减速器长度(L) Length(L) mm	66	66	90	90	90	90	115	115	115	115	115	115	115	115
空载转速 No-load speed r/min	500	286	143	105	80	63	40	31	28	22	17	13	10	6
额定转速 Rated speed r/min	413	236	118	87	66	52	33	26	23	18	14	11	8.5	5
额定转矩 Rated torque N.m	1.6	2.8	5.0	6.8	8.9	11	16	21	23	29	37	49	63	106
最大瞬间允许负载 Max. permissible load in a short time N.m	60	60	180	180	180	180	360	360	360	360	360	360	360	360

配置80ZY125-2435直流电机 (80ZY125-2435 DC Motor)

减速比 Reduction ratio	4	7	14	19	25	32	50	64	71	90	116	152	195
减速级数 Number of gear trains	1	1	2	2	2	2	3	3	3	3	3	3	3
减速器长度(L) Length(L) mm	66	66	90	90	90	90	115	115	115	115	115	115	115
空载转速 No-load speed r/min	875	500	250	184	140	109	70	55	49	39	30	23	18
额定转速 Rated speed r/min	688	393	196	145	110	86	55	43	39	31	24	18	14
额定转矩 Rated torque N.m	3.4	6.0	11	15	19	25	35	44	49	62	80	105	120
最大瞬间允许负载 Max. permissible load in a short time N.m	60	60	180	180	180	180	360	360	360	360	360	360	360

● 电动机特性图 Motor Characteristic Figure

