

混合式步进行星齿轮减速电机 (内齿圈材质: 金属)

Planetary Gear Stepping Motor (Ring Gear Material: Metal)

22JXS20K/20STH

Φ22行星减速器, 允许转矩范围: 0.6N.m~2.0N.m
22mm Planetary Gearbox
Permissible Load Range: 0.6N.m~2.0N.m

● 行星齿轮减速器 Planetary Gearbox

内齿圈材料	Ring material	金属 Metal
输出轴轴承形式	Bearing at output	滚动轴承 Ball bearings
最大允许径向负载 (离法兰10mm处) Max. Radial load(10mm from flange)		≤20N
最大允许轴向负载 Max. shaft axial load		≤10N
径向间隙 (测量点尽量接近法兰) Radial play of shaft (near to flange)		≤0.08 mm
轴向间隙 Axial play of shaft		≤0.3 mm
背隙 (无负载时) Backlash at no-load		≤1.5°



● 20STH混合式步进电机性能 20STH Hybrid Stepping Motor Specifications

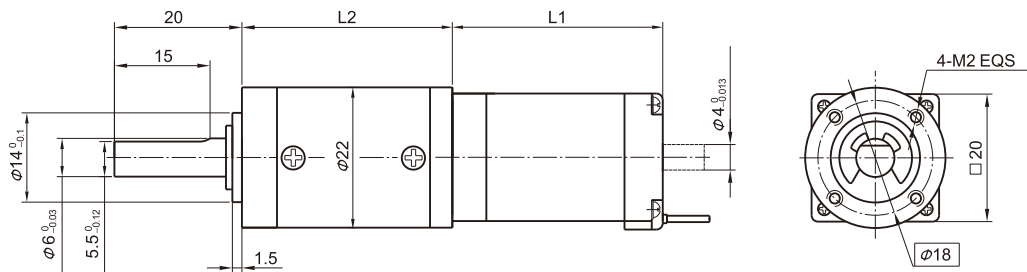
Model No.	额定电压 Rated Voltage	每相电流 Current /Phase	每相电阻 Resistance /Phase	每相电感 Inductance /Phase	保持转矩 Holding Torque	引出线数 # of Leads	转动惯量 Rotor Inertia	重量 Weight	长度 L1 Length L1	适配减速比 Max. Gear Ratio
单轴 Single Shaft	V	A	Ω	mH	g.cm		g·m ²	g	mm	
20STH33-0604A	3.9	0.6	6.5	1.7	180	4	2.0	60	33	≤1:369
20STH42-0804A	4.32	0.8	5.4	1.5	300	4	3.6	80	42	≤1:264

常规产品是单出轴, 可以订货双出轴, 型号的后缀号A改为B。 A Single Shaft, B Double shaft

● 22JXS20K行星减速器性能 22JXS20K Planetary Gearbox Specifications

减速比 Reduction ratio	3.71	5.18	14	19	27	51	71	100	139	189	264	369
减速级数 Number of gear trains	1		2			3			4			
减速器长度 (L2) Length(L2) mm	24.4		33.0			41.5			49.8			
最大额定转矩 Max. rated torque kg.cm	6		10			16			20			
瞬间允许转矩 Short time permissible torque kg.cm	18		30			48			60			
效率 Efficiency %	90%		81%			73%			66%			
重量 Weight g	35		45			55			65			

● 外形和安装尺寸 Dimensions



● 矩频曲线 Frequency-torque Characteristics

