

混合式步进行星齿轮减速电机 (内齿圈材质: 金属)

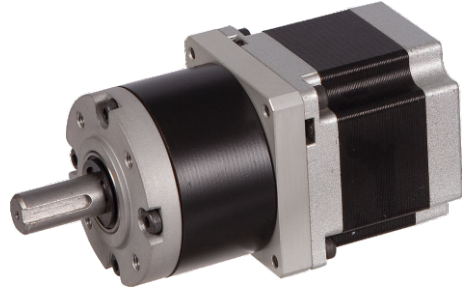
Planetary Gear Stepping Motor (Ring Gear Material: Metal)

56JXS300K/57STH

Φ56标准型减速器(带油封), 允许转矩范围: 9.0N.m~30N.m
56mm OD Standard Gearbox(With Oil Seal),
Permissible Load Range: 9.0N.m~30N.m

● 行星齿轮减速器 Planetary Gearbox

| | | |
|---|-------------------|--------------------|
| 内齿圈材料 | Ring material | 金属 Metal |
| 输出轴轴承形式 | Bearing at output | 滚动轴承 Ball bearings |
| 最大允许径向负载 (离法兰10mm处) Max. Radial load(10mm from flange) | | ≤250N |
| 最大允许轴向负载 Max. shaft axial load | | ≤100N |
| 径向间隙 (测量点尽量接近法兰) Radial play of shaft (near to flange) | | ≤ 0.08 mm |
| 轴向间隙 Axial play of shaft | | ≤0.4 mm |
| 背隙 (无负载时) Backlash at no-load | | ≤1.5° |



● 57STH大转矩混合式步进电机性能 57STH High Torque Hybrid Stepping Motor Specifications

| 型号 Model No. | 额定电压 Rated Voltage | 每相电流 Current /Phase | 每相电阻 Resistance /Phase | 每相电感 Inductance /Phase | 保持转矩 Holding Torque | 引出线数 # of Leads | 转动惯量 Rotor Inertia | 重量 Weight | 长度L1 Length L1 | 定位转矩 Rotor Inertia | 适配减速比 Max. Gear Ratio |
|-----------------|-----------------------|------------------------|---------------------------|---------------------------|------------------------|--------------------|-----------------------|--------------|-------------------|-----------------------|--------------------------|
| 单轴 Single Shaft | V | A | Ω | mH | Kg.cm | | g-m ² | Kg | mm | Kg-cm | |
| 57STH41-1006A | 5.7 | 1 | 5.7 | 5.4 | 3.9 | 6 | 120 | 0.45 | 41 | 0.21 | 1:326 |
| 57STH41-2006A | 2.8 | 2 | 1.4 | 1.4 | 3.9 | 6 | | | | | 1:326 |
| 57STH41-3006A | 1.9 | 3 | 0.63 | 0.6 | 3.9 | 6 | | | | | 1:326 |
| 57STH41-2804A | 2 | 2.8 | 0.7 | 1.4 | 5.5 | 4 | | | | | 1:234 |
| 57STH51-1006A | 6.6 | 1 | 6.6 | 8.2 | 7.2 | 6 | 275 | 0.65 | 51 | 0.36 | 1:168 |
| 57STH51-2006A | 3.3 | 2 | 1.65 | 2.2 | 7.2 | 6 | | | | | 1:168 |
| 57STH51-3006A | 2.2 | 3 | 0.74 | 0.9 | 7.2 | 6 | | | | | 1:168 |
| 57STH51-2804A | 2.3 | 2.8 | 0.83 | 2.2 | 10.1 | 4 | | | | | 1:77 |
| 57STH56-1006A | 7.4 | 1 | 7.4 | 10 | 9.0 | 6 | 300 | 0.7 | 56 | 0.4 | 1:77 |
| 57STH56-2006A | 3.6 | 2 | 1.8 | 2.5 | 9.0 | 6 | | | | | 1:77 |
| 57STH56-3006A | 2.3 | 3 | 0.75 | 1.1 | 9.0 | 6 | | | | | 1:77 |
| 57STH56-2804A | 2.5 | 2.8 | 0.9 | 2.5 | 12.6 | 4 | | | | | 1:77 |

● 56JXS300K行星齿轮减速器性能 56JXS300K Planetary Gearbox Specifications

分加强型、长寿型两种型号 2 Types: Reinforced or Long Life Gearbox

| 减速比 Reduction ratio | 3.60 | 4.25 | 7.5 | 13 | 15 | 18 | 27 | 32 | 47 | 55 | 65 | 77 | 168 | 198 | 234 | 276 | 326 |
|--|------|------|-----|-----|----|----|----|-----|----|----|----|------|-----|-----|-----|-----|-----|
| 减速级数 Number of gear trains | 1 | | | 2 | | | | 3 | | | | 4 | | | | | |
| 减速器长度(L2) Length(L2) mm | 53 | | | 61 | | | | 72 | | | | 84 | | | | | |
| 最大额定转矩 Max. rated torque kg.cm | 90 | | | 150 | | | | 240 | | | | 300 | | | | | |
| 瞬间允许转矩 Short time permissible torque kg.cm | 270 | | | 450 | | | | 720 | | | | 900 | | | | | |
| 效率 Efficiency % | 90% | | | 81% | | | | 73% | | | | 66% | | | | | |
| 重量 Weight g | 640 | | | 710 | | | | 880 | | | | 1220 | | | | | |

● 外形和安装尺寸 Dimensions

